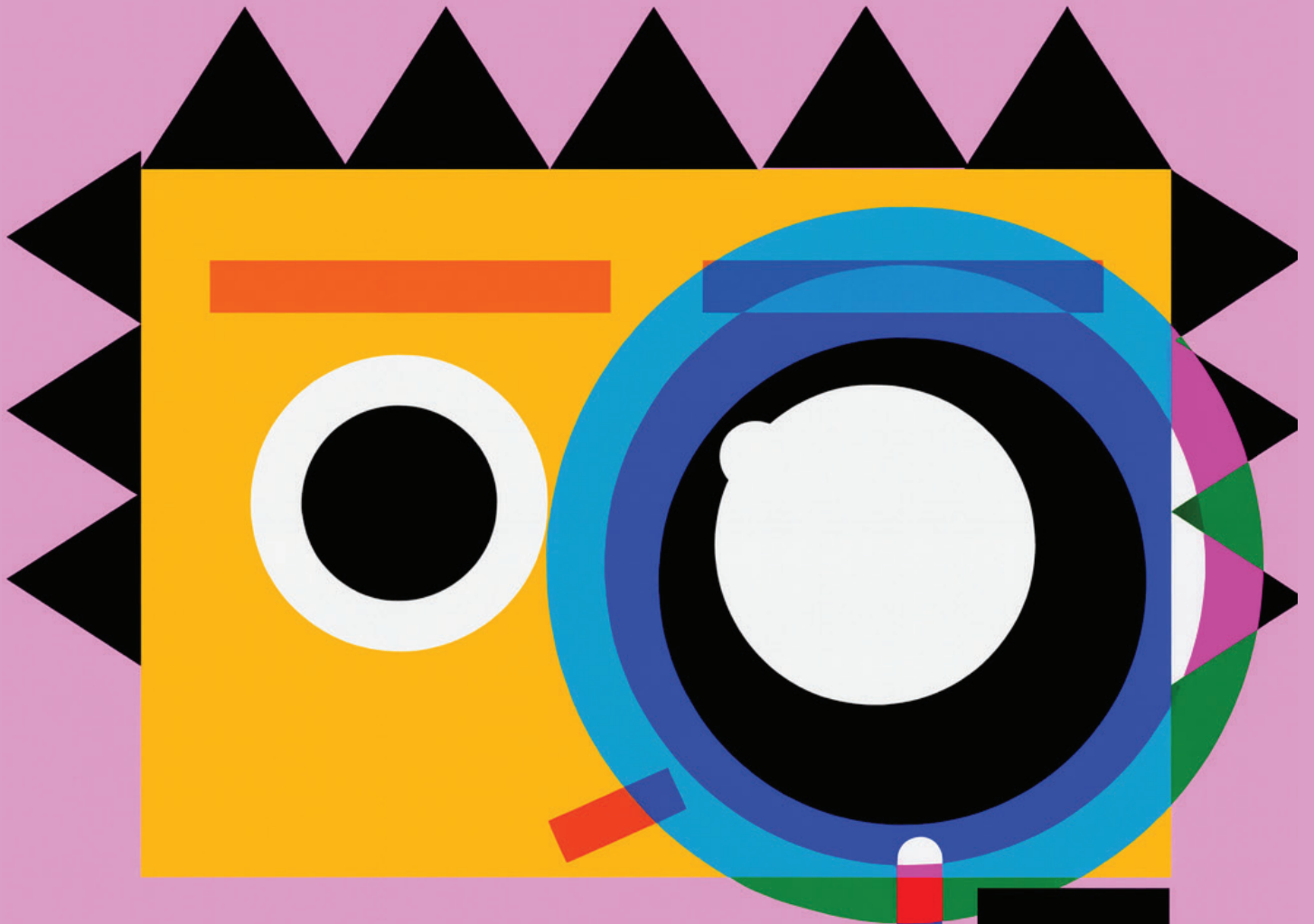


**cloud
theatre**



HOLMES & HOLMES WORKBOOK



The Plot

Enola Holmes is a clever young girl living in London. One day, a mysterious package arrives at her door. It has no name, no sender – just a puzzle inside. Enola thinks it might be a clue about her missing mother. So, she opens it... and everything changes.

Soon, her famous brother, Sherlock Holmes, returns home. Together, they begin a journey full of mystery, danger, and smart thinking. Strange letters, secret messages, and an old enemy – Lord Moran – lead them across the ocean to New York City.

Will the Holmes siblings solve the mystery? Can they find their mother in time?

One thing is sure: they will need all their courage and brainpower to win this game of clues and shadows.



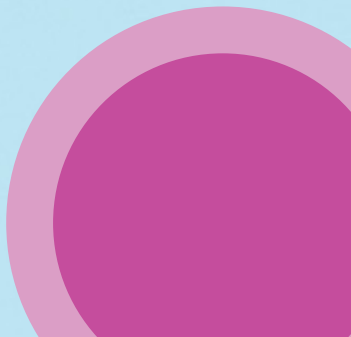
Characters

Enola Holmes is Sherlock Holmes' younger sister. She is clever, brave, and always asks good questions. Enola loves solving mysteries and wants to find her missing mother. Even though she is young, she has a strong heart and never gives up.

Sherlock Holmes is a world-famous detective known for his brilliant mind and calm personality. He is Enola's older brother. Sherlock follows small clues to solve big problems. He is serious and logical, but he cares deeply about his family.

Lord Moran is the villain in the story. He is very smart and dangerous. He likes puzzles and secrets. Lord Moran wants power and control. He has a plan that could hurt many people, and only Enola and Sherlock can stop him.

The Postman The postman brings a mysterious package to Enola. He knows strange things and speaks in riddles.



Level A2.2 Grammar Exercises

BEFORE the play

A. Read the sentences and fill in the blanks with the correct form of the verb in past simple.

1. Enola Holmes _____ (search) all around London for her mother.
2. Sherlock Holmes _____ (come) back from Istanbul with news.
3. The strange postman _____ (leave) quickly after giving the package.
4. Enola _____ (open) the box and _____ (find) a puzzle.
5. Sherlock _____ (see) the handwriting and _____ (know) something was wrong.

B. Choose the correct form of the verb to complete each sentence.

1. Enola always _____ (look / looks / is looking) for clues in her home.
2. Sherlock _____ (travels / is traveling / travel) around the world to solve crimes.
3. Right now, Enola _____ (is reading / reads / read) a letter from her mother.
4. The postman often _____ (comes / is coming / come) at noon. Look! Enola _____ (opens / is opening / open) the strange package!

Level A2.2 Grammar Exercises

AFTER the play

C. Complete the sentences using the correct form of the adjective.

1. Lord Moran is the _____ (dangerous) man Sherlock has met.
2. Enola is _____ (brave) than most adults.
3. Sherlock is the _____ (smart) detective in the world.
4. Their adventure in New York was _____ (exciting) than any case before.
5. Holmes & Holmes are the _____ (quick) team in action.

D. Fill in the blanks with the correct modal verb.

(must, might, should, can)

1. We _____ go to New York. The clue is there!
2. You _____ open packages that are not yours, Enola.
3. Lord Moran _____ be planning something big.
4. We _____ stop him before it's too late.
5. Sherlock and Enola _____ work together to save their mom.

Level A2.2 Vocabulary Exercises

After the play

A. Write the correct word from the box into each sentence.

smart – dangerous – kind – strong – famous – funny

1. Sherlock Holmes is very _____. He solves every problem with his brain.
2. Lord Moran is a _____ man. The Holmes siblings must be careful.
3. Enola Holmes is _____ and brave. She never gives up.
4. Everyone knows Sherlock. He is a _____ detective.
5. Lord Moran is not _____. He wants to hurt people.

B. Match the words with their meanings.

1. Clue
2. Disguise
3. Chase
4. Suspect

- a. follow someone to catch them
- b. something that helps you solve a mystery
- c. to hide who you are by changing your appearance
- d. a person who may have committed a crime

Level A2.2 Vocabulary Exercise

BEFORE the play

C. Match the words with the correct definitions. Write the correct letter next to each number.

- 1 ___ detective
- 2 ___ clue
- 3 ___ package
- 4 ___ puzzle
- 5 ___ statue
- 6 ___ message
- 7 ___ handwriting
- 8 ___ mystery

Definitions:

- A. A surprise or problem made of pieces to solve
- B. A person who solves crimes
- C. Words written by hand
- D. Something you send with a postman
- E. A piece of information that helps you solve something
- F. A secret or strange situation
- G. Something someone wants you to read or hear
- H. A figure made from stone or metal

Level A2.2 Writing Exercise

After the play

A. Write a short letter (50–60 words) to Sherlock Holmes.

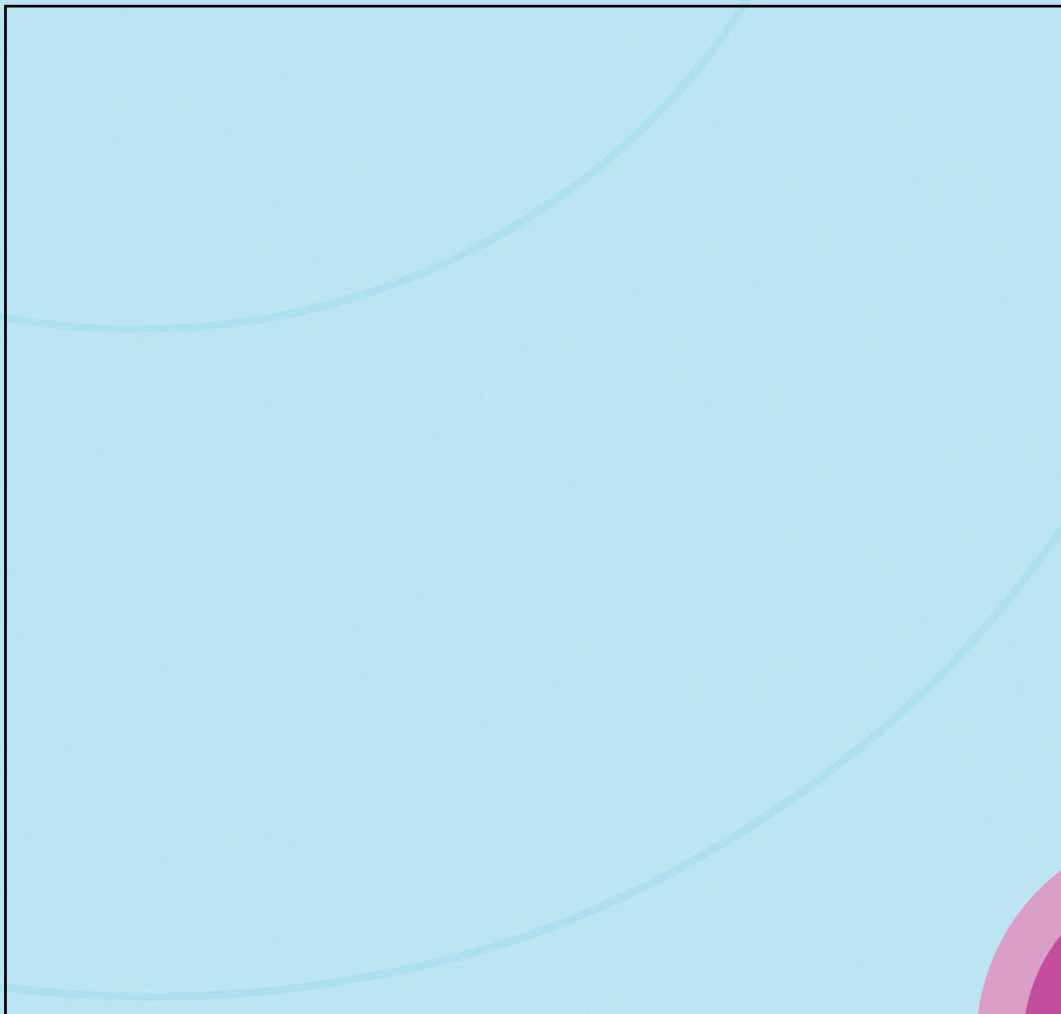
Instructions:

Tell him:

What you learned from the adventure with Lord Moran.

What your favorite moment was.

How you felt at the end.



Level B1.1 Grammar Exercises

BEFORE the play

A. Rewrite the sentences in reported speech

1. Sherlock said, "We must stop Lord Moran."
2. Enola asked, "Where is our mother?"
3. Lord Moran said, "I will destroy the Statue of Liberty."
4. Sherlock said, "We should make a plan."

B. Fill in the blanks.

(must / might / can't)

1. That man is wearing a disguise. He _____ be Lord Moran.
2. We don't see our mother anywhere. She _____ be safe at home.
3. It's very quiet here. Moran _____ be planning something.
4. The package is too light. It _____ contain the bomb.

Level B1.1 Grammar Exercises

AFTER the play

C. Complete the sentences using **who**, **which**, or **where**.

1. Sherlock is the detective _____ solved many dangerous cases.
2. Enola is the sister _____ helped save New York.
3. The Statue of Liberty is the place _____ Lord Moran wanted to destroy.
4. Lord Moran is the man _____ Holmes defeated.

D. Complete the sentences using the **Past Perfect** or **Past Simple** form of the verbs in brackets.

1. By the time Sherlock arrived at the Statue of Liberty, Lord Moran _____ (already / set) his trap.
2. Enola quickly realised that the enemy _____ (hide) the explosives inside the monument.
3. Sherlock _____ (not / expect) to see his mother there.
4. After they _____ (defeat) Lord Moran, they called the police.
5. The police _____ (arrive) just in time to arrest Moran.

Level B1.1 Vocabulary Exercises

AFTER the play

A. Match the adjectives with their correct meanings.

1. Cunning
 2. Resourceful
 3. Ruthless
 4. Brave
 5. Determined
 6. Arrogant
-
- a) Showing no pity or compassion for others
 - b) Full of self-importance
 - c) Clever at planning and deceiving
 - d) Willing to face danger without fear
 - e) Able to find quick solutions to problems
 - f) Not giving up easily



Level B1.1 Vocabulary Exercises

AFTER the play

B. Complete each sentence with the correct word from the box.

freedom – disguise – evidence – sabotage – statue – explosion

1. Sherlock believed Lord Moran was planning to destroy the _____ of Liberty.
2. The newspaper article mentioned stolen explosives, a clear piece of _____.
3. Moran was a master of _____, making it hard to recognise him.
4. Enola feared the plan was to take away the city's _____.
5. Damaging the escape boats was a clear act of _____.
6. The loud _____ could be heard all across the harbour.

C. Fill in the blanks with the correct word: victory, escape, capture.

1. Sherlock and Enola's _____ over Lord Moran saved the city.
2. The villain tried to _____ from the scene but failed.
3. The police managed to _____ him before he could press the button.

Level B1.1 Vocabulary Exercises

AFTER the play

B. Complete each sentence with the correct word from the box.

freedom – disguise – evidence – sabotage – statue – explosion

1. Sherlock believed Lord Moran was planning to destroy the _____ of Liberty.
2. The newspaper article mentioned stolen explosives, a clear piece of _____.
3. Moran was a master of _____, making it hard to recognise him.
4. Enola feared the plan was to take away the city's _____.
5. Damaging the escape boats was a clear act of _____.
6. The loud _____ could be heard all across the harbour.

C. Fill in the blanks with the correct word: victory, escape, capture.

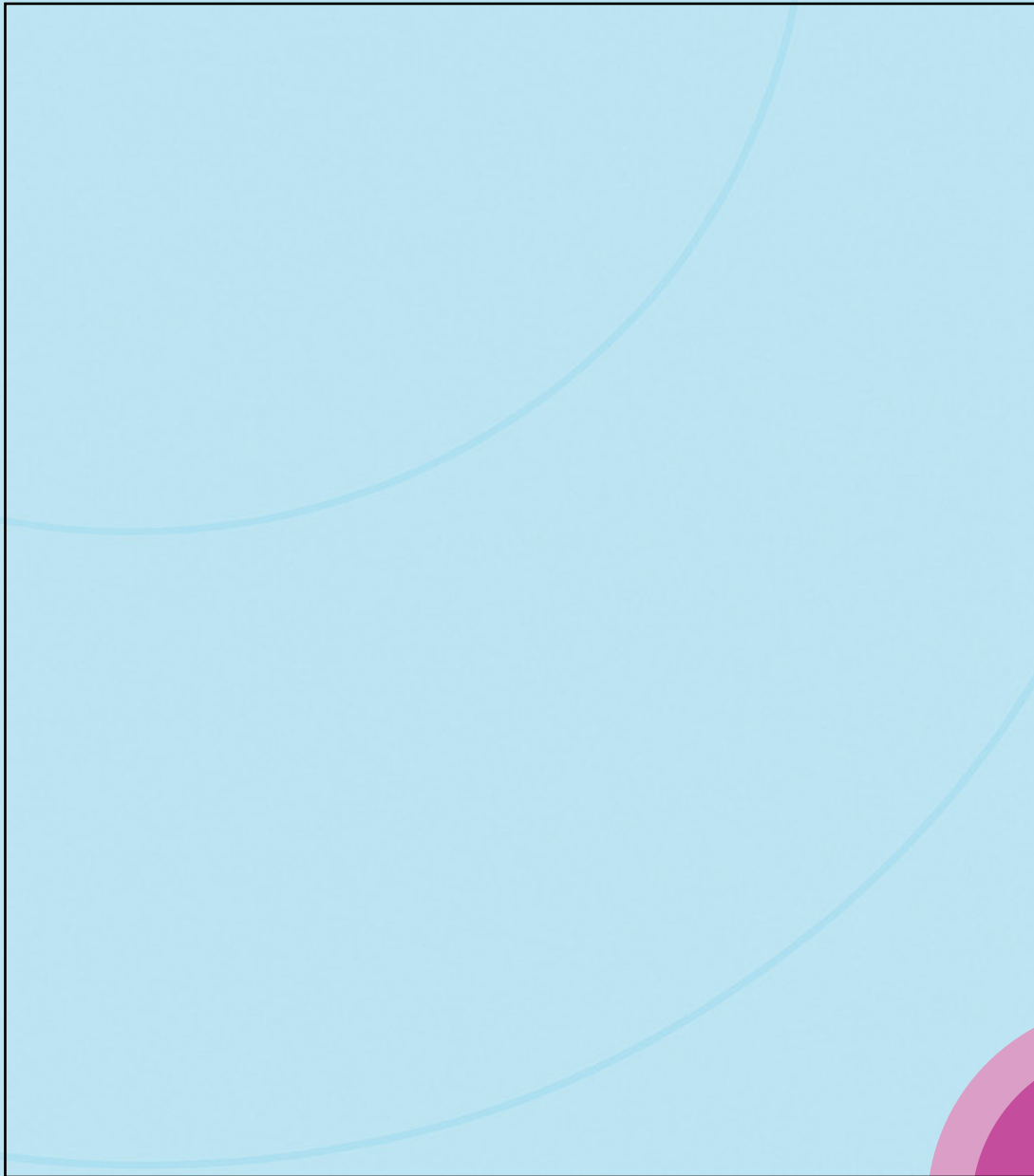
1. Sherlock and Enola's _____ over Lord Moran saved the city.
2. The villain tried to _____ from the scene but failed.
3. The police managed to _____ him before he could press the button.



Level B1.1 Writing Exercises

AFTER the play

A. Write 5–6 sentences describing how Sherlock and Enola stopped Lord Moran's plan. Use at least two quotes from the play and include your own opinion about the ending.





Songs

English Man In New York *by Sting*

I don't drink coffee, I take tea, my dear
I like my toast done on one side
And you can hear it in my accent when I talk
I'm an Englishman in New York

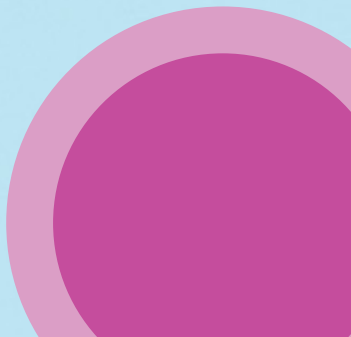
See me walking down Fifth Avenue
A walking cane here at my side
I take it everywhere I walk
I'm an Englishman in New York

Oh, I'm an alien, I'm a legal alien
I'm an Englishman in New York
Oh, I'm an alien, I'm a legal alien
I'm an Englishman in New York

If "manners maketh man" as someone said
He's the hero of the day
It takes a man to suffer ignorance and smile
Be yourself no matter what they say

Oh, I'm an alien, I'm a legal alien
I'm an Englishman in New York
Oh, I'm an alien, I'm a legal alien
I'm an Englishman in New York

Modesty, propriety can lead to notoriety
You could end up as the only one
Gentleness, sobriety are rare in this society
At night a candle's brighter than the sun





Songs

Master Of The Game *by Cloud Theatre*

I move the pieces on the board,
Every step, I have explored.
While they guess, I'm far ahead,
Every word I've ever said... was planned.

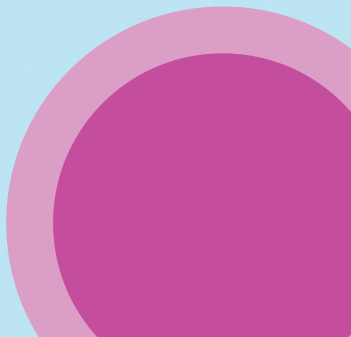
A shadow moves, they never see,
The clever hand, well—that is me.
In the crowd or in the light,
I can win without a fight... you'll see.

I'm the master of the game,
Every move builds my name.
Like a story with no end,
I'm the storm around the bend.

Some use force, but I use art,
A sharper mind, a colder heart.
Every door I choose to lock,
Is a perfectly timed clock... for you.

I'm the master of the game,
Every move builds my name.
Like a story with no end,
I'm the storm around the bend.

"You think you're chasing me...
but I've already won."





Songs

Case Closed *by Cloud Theatre*

We searched the streets, we found the way,
Through darkest night and brightest day,
The clues were small, the trail was thin,
But step by step we closed him in.

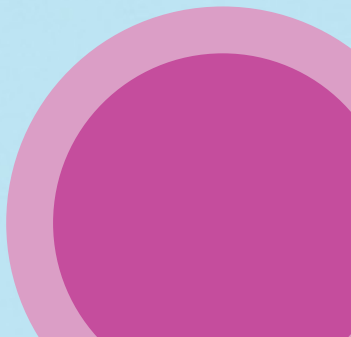
The truth was hiding in the shade,
We cracked the plan that Moran made,
With courage high and minds so clear,
The end of danger's finally here.

Case closed, we win today,
The villain's gone, he's locked away,
Case closed, the world can see,
We're Holmes and Holmes, and we are free.

The game is done, the fight is won,
The longest night has met the sun,
The city sleeps in peace tonight,
Because we stood and chose the right.

Case closed, we win today,
The villain's gone, he's locked away,
Case closed, the world can see,
We're Holmes and Holmes, and we are free.

Holmes and Holmes — the mystery ends.



Student Script

SCENE 3: LORD MORAN'S REVEAL — NEW YORK

LORD MORAN:

Sherlock... You always were clever.
But this is my land. My rules.
You don't know New York like I do.

(Agents enter stage)

AGENT 1

Sherlock and Enola are staying at the Maple Hotel.

AGENT 2

Enola went out and bought newspapers and magazines.

(Agents exit stage)

LORD MORAN:

I knew Sherlock would check the newspapers.
He always looks for meaning in small places.
So I gave him something to find.
A tennis match.
A clue.
A time.
That is where we shall meet.
(Turns to audience — smooth tone.)

LORD MORAN:

Now, tell me — have you ever been somewhere new?
A big city? A strange place?
Did you feel small... or powerful?

(Brief pause for 1–2 answers.)

LORD MORAN (grins):

Yes. Every city has secrets.
Even you have secrets... don't you?
Sherlock is coming. Enola too.
And I will be waiting.
Not with guns. Not with fear.
But with... a game.

(Lights dim slowly. Music returns — instrumental echo of the earlier song.)

Lights off

Exit Stage

SCENE 7: THE STATUE OF LIBERTY

(A dramatic instrumental plays. Lights focus on LORD MORAN, standing center stage. He begins slowly, with calm menace.)

LORD MORAN:

This is it. The final act. The heart of freedom — now under my control.

Sherlock Holmes, the brilliant mind.

Enola, the curious spark.

And now... my greatest audience.

You.

(He turns to the audience.)

LORD MORAN:

Tell me, children...

Do you think heroes always win?

Or do villains sometimes play the better game?

(Agents enter stage.)

AGENT 1: Lord Moran. They are here.

AGENT 2: Do you need anything, sir?

LORD MORAN:

No. Everything is going just as I planned.

(Agents exit stage)

TRANSFORMING WORDS INTO WORLDS

**cloud
theatre**